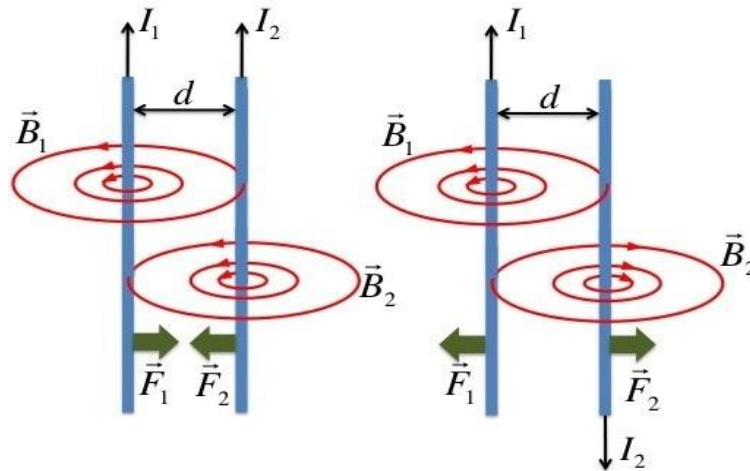
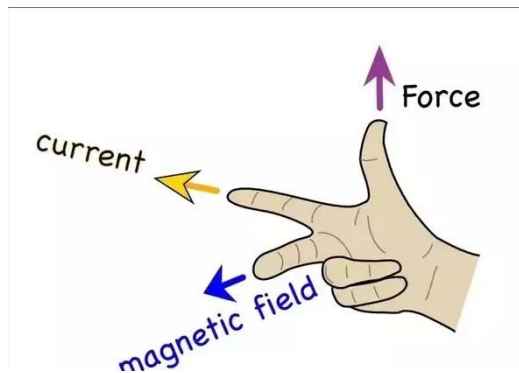


Answer on Question #85927, Physics / Electromagnetism

According to right hand thumb rule, the magnetic field lines in red generated by the currents flowing in two wires is shown in following figure. They show also the forces produced by the two magnetic fields. In the left figure the currents flow in the same direction, while in the right figure the currents flow in the opposite direction.



Two wires carrying current in the same direction attract each other, otherwise they repel.



The direction of the magnetic force can be found by using the right hand rule.

The rule assumes that the current has the conventional direction (positive charges).