

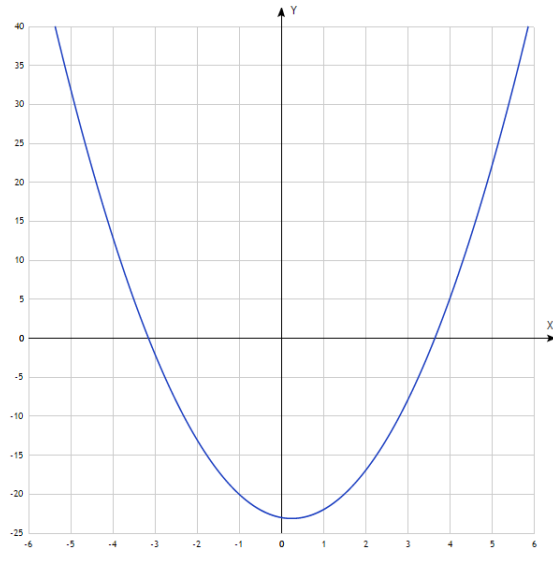
Answer on Question #68566 - Math - Algebra

Question: Tim has drawn the graph of $y = 2x^2 - x - 23$

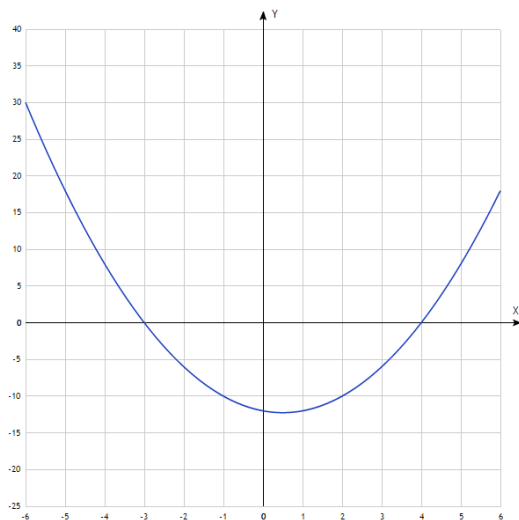
What line should be drawn on the graph to solve the equation $x^2 - x - 12 = 0$?

Solution:

Tim's graph:



Graph we need to solve the equation $x^2 - x - 12 = 0$ is $y(x) = x^2 - x - 12$. Solutions of the equation are intersections of the graph and the X-axis.



Answer:

$$\begin{aligned}x_1 &= -3 \\x_2 &= 4\end{aligned}$$