

Answer on Question #58921 – Math – Trigonometry

Question

The notation $\text{Arcsin } x$ represents the inverse sine function.

True

False

Answer: True.

Question

The expression $\cos^{-1}\left(\frac{3}{5}\right)$ has an infinite number of values.

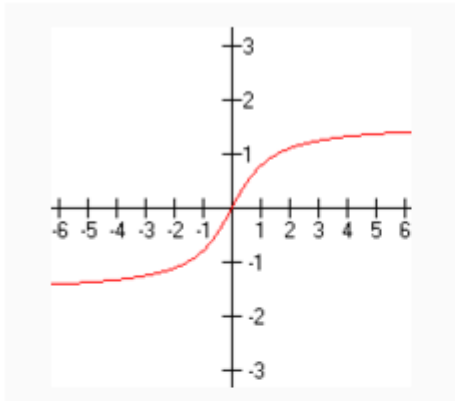
False

True

Answer: False.

Question

The following graph depicts which inverse trigonometric function?



$y = \text{Arcsin } x$

$y = \text{Arccos } x$

$y = \text{Arcsec } x$

$y = \text{Arctan } x$

Answer: $y = \text{Arctan } x$.