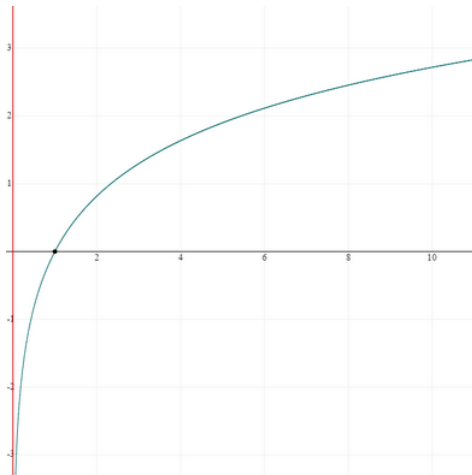


Answer on Question #57292 Math / Algebra

Task: how do you sketch $g(x)=-3\ln(x-2)$

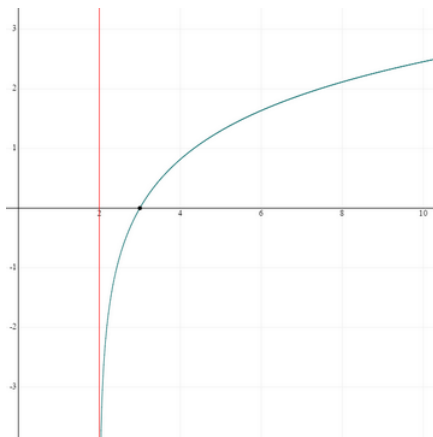
Solution.

Build a sketch of the given function by successive transformation graph of the function $y=\ln(x)$.



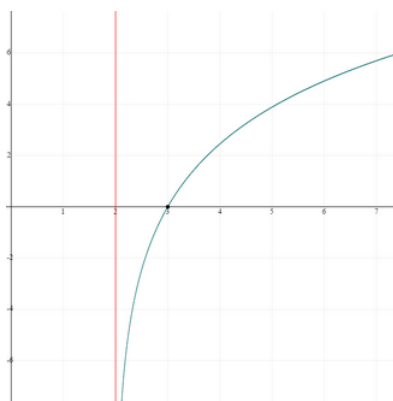
$$y=\ln(x)$$

1. Move this graph 2 units right along the x-axis.



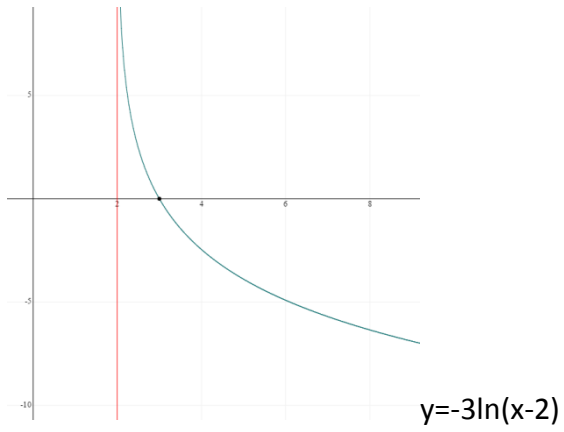
$$y=\ln(x-2)$$

2. Stretch it into 3 times along the y-axis.



$$y=3\ln(x-2)$$

3. Make symmetry in regard to x-axis.



www.AssignmentExpert.com