

Answer on Question #57199 – Math – Analytic Geometry

Question

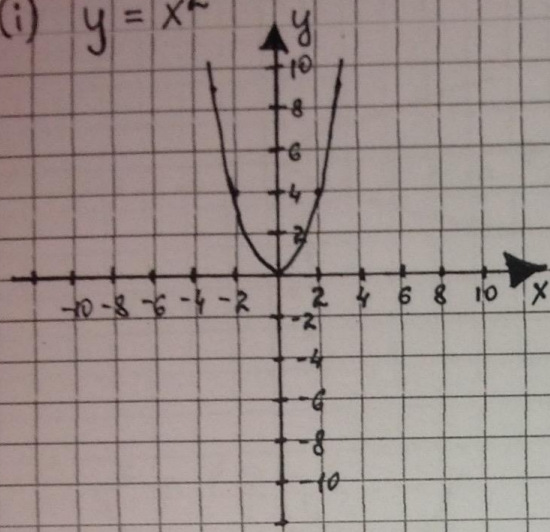
Draw the graph of following functions on graph paper.

- (i) $y=x^2$
- (ii) $y=x^2+1$
- (iii) $y^2=x$
- (iv) $y^2=4x+2$
- (v) $y^2=x-1$
- (vi) $x^2=4y$
- (vii) $x^2=4y-1$
- (viii) $x^2+y^2=1$
- (ix) $x^2-y^2=1$
- (x) $x^2+y^2=0$

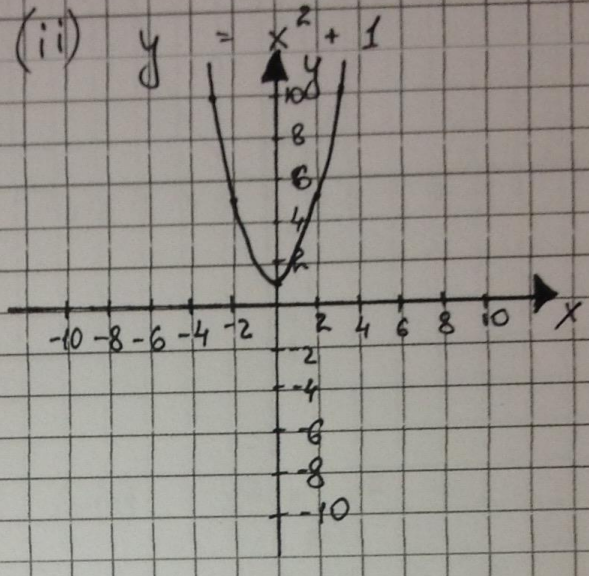
Solution

Q. Draw the graph of following functions on graph paper.

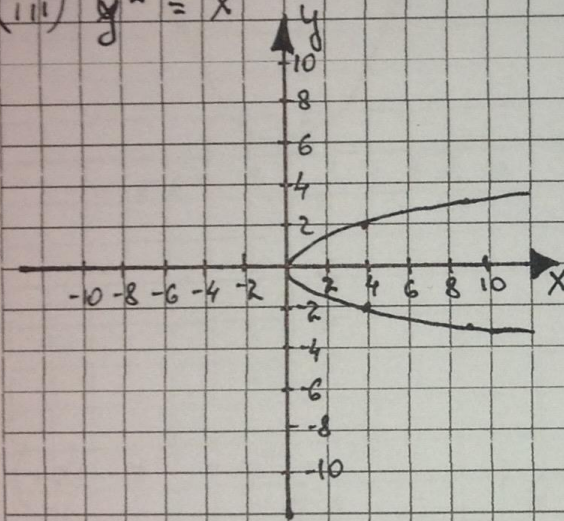
(i) $y = x^2$



(ii) $y = x^2 + 1$



(iii) $y^2 = x$



(iv) $y^2 = 4x + 2$

