

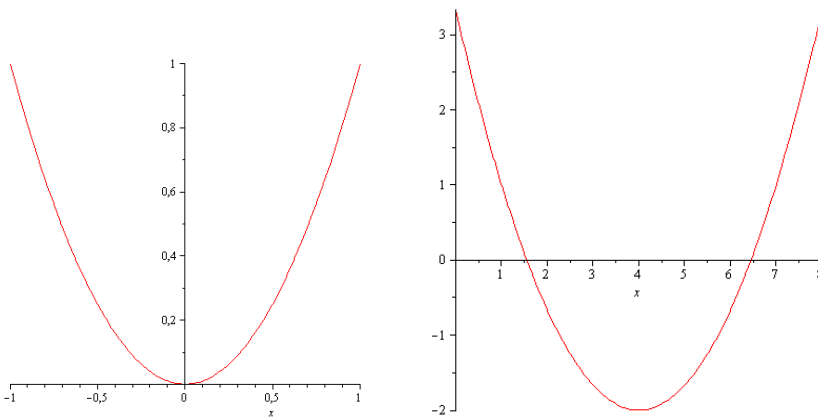
Answer on Question #55819 – Math – Algebra

Question 1. In the function $y + 2 = \frac{1}{3}(x - 4)^2$, what effect does the number 4 have on the graph, as compared to the graph of $y = x^2$

- A: It shifts the graph 4 units to the right.
- B: It shifts the graph 4 units to the left.
- C: It shifts the graph up 4 units.
- D: It shifts the graph down 4 units.

Solution

The correct answer is "A: It shifts the graph 4 units to the right."



Question 2. A vertical shift is an example of a non-rigid transformation.

- A: True
- B: False

Solution

The correct answer is "B: False". (This is an example of a rigid transformation since it does not change the shape or size of the preimage).