

Answer on Question #52355 – Math – Calculus

Plot the following curves that are given parametrically as:

a) $x = t(t-2)$ and $y = t+4$

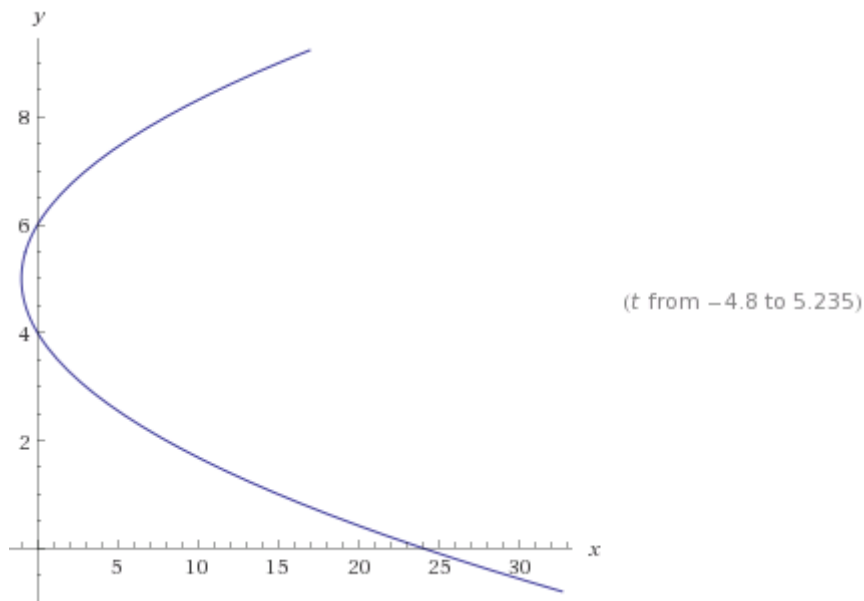
b) $x = t^2$ and $y = t^3 - t$ for $-1 \leq t \leq 1$

Solution

Plot the following curves that are given parametrically as:

We use WolframAlpha.

a) $x = t(t-2)$ and $y = t+4$



b) $x = t^2$ and $y = t^3 - t$ for $-1 \leq t \leq 1$

