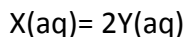


### Answer on Question #68286, Chemistry / General Chemistry

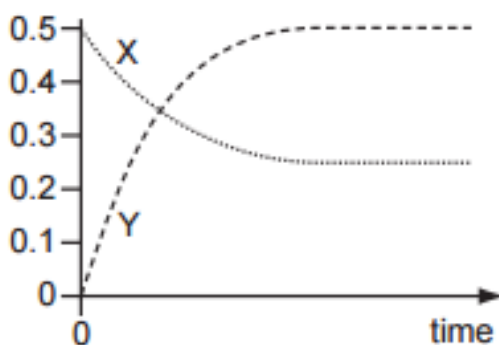
A dimer, X, is stable when solid but a dynamic equilibrium is set up in solution.



A solution of X has an initial concentration of  $0.50 \text{ mol dm}^{-3}$ . When equilibrium has been reached  $[X(aq)]$  has fallen to  $0.25 \text{ mol dm}^{-3}$ .

The changes in  $[X(aq)]$  and  $[Y(aq)]$  are plotted against time until equilibrium is reached. The value of  $K_c$  is then calculated. Which graph and value for  $K_c$  are correct?

**Answer:  $K_c = 1$**



Answer provided by <https://www.AssignmentExpert.com>